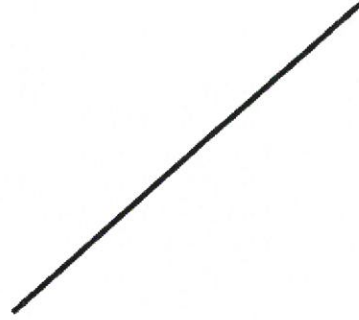


## Pack for contrast of place



**This pack should only be used under the guidance of a Speech and Language Therapist**

Original Concepts by Speech and Language Therapists in Hull and East Yorkshire  
Updated by Rona Gaffney 2015



Name: School:					D.O.B:				
Overall aim(s)	Where am I now?	What will I achieve?	Outcome	Actual Outcome					
To help the child improve their speech production skills to their full potential	The child is not producing sounds in the correct position in their mouth.	The child will be able to identify the correct word in a minimal pair 80% of the time during structured therapy activities  The child will be able to produce sounds in the correct position 80% of the time during structured therapy activities							
Therapy package: Targets will be reviewed as agreed with the speech and language therapist	Timescale: As agreed with the speech and language therapist	Factors contributing to outcome: Commitment from adults working with the child and regularity of practice.							

Please work through the following activities. If you have any questions or feel that the targets have been achieved, please contact the speech and language therapist.



## Ideas for minimal pairs

(Photocopy the pictures several times)

**Listening Game** – Place a set of pictures in front of the child. Ask the child to listen as you say the words and point to the picture/put a counter on the one they hear. If you want to make this game more difficult use a carrier phrase (e.g. I see a ...).

**Sorting Game** – Ask the child to sort the pictures into piles according to the first sound.

**Matching Game** – Shuffle the cards and place them face down on a table. Take turns to pick up 2 cards and try and get the matching pair. Ask the child to say the words. If they say them correctly they can keep the pair. If not they have to place them face down on the table again.

**Make a sentence** – Choose 2/3 cards and make a sentence with them. Then ask the child to copy the sentence. If they say the words correctly, then they can keep the cards. Continue until the child has all the cards.



p/t



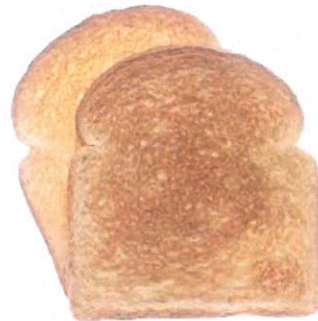
pie



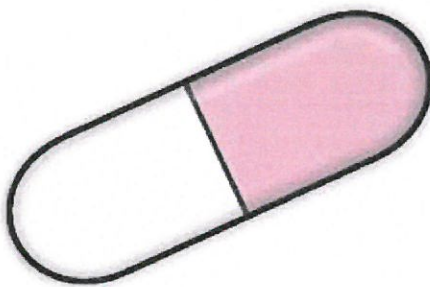
tie



post



toast



pill



till

Created by Rona Gaffney 03.08.12

© Speech and Language Therapy, Humber NHS Foundation Trust



p/k



pan



can



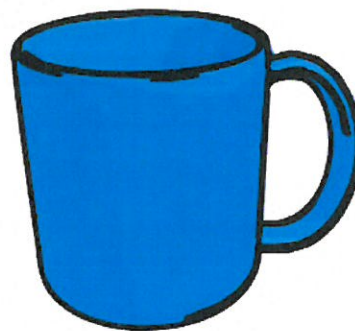
pub



cub



pup



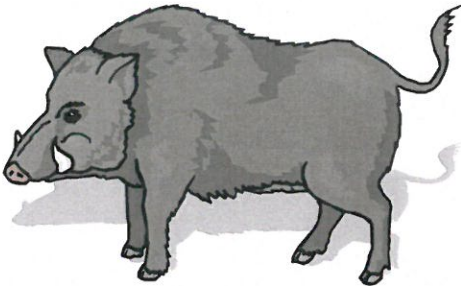
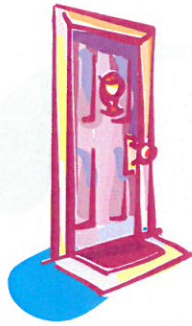



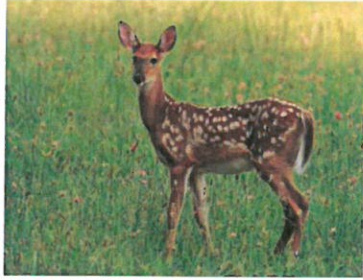
cup

Created by Rona Gaffney 03.08.12

© Speech and Language Therapy, Humber NHS Foundation Trust



b/d

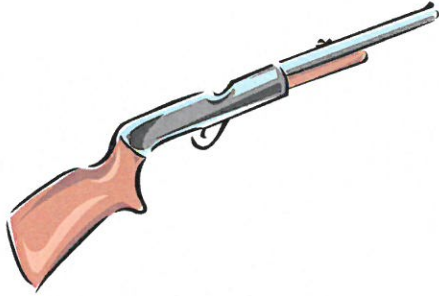
 <p>boar</p>	 <p>door</p>
 <p>bay</p>	 <p>day</p>
 <p>beer</p>	 <p>deer</p>

Created by Helen Jacobs 19.10.12  
Updated by Rona Gaffney 2015

© Speech and Language Therapy, Humber NHS Foundation Trust



g/b



gun



bun



goat



boat



go



bow

Updated by Rona Gaffney 2015

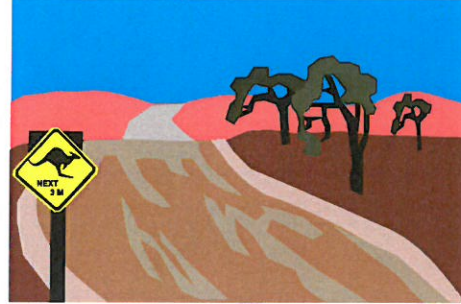
© Speech and Language Therapy, Humber NHS Foundation Trust



k/t



car



tar



key



tea



cap

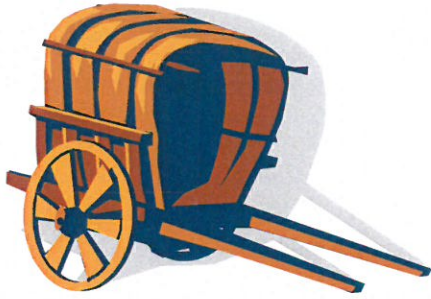


tap

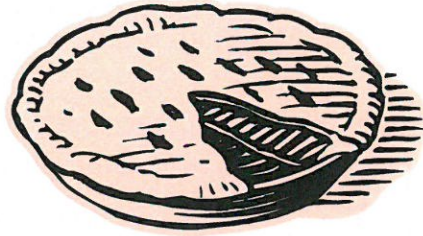
Updated by Rona Gaffney 03.08.12







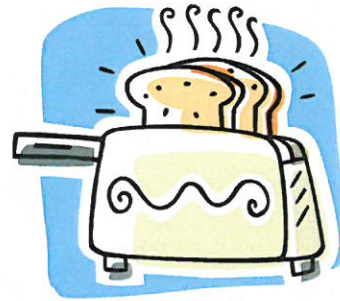
cart



tart



coast



toast



can

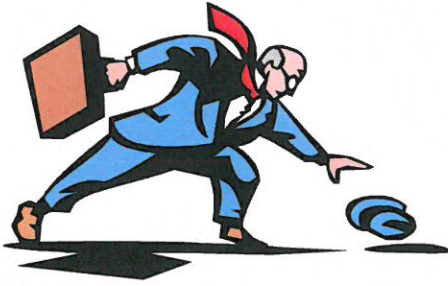


tan

Updated by Rona Gaffney 03.08.12



g/d



gust



dust



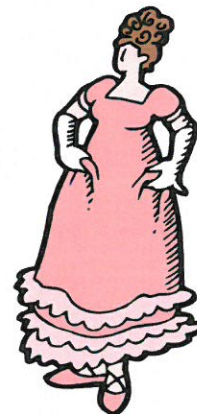
gull



dull



game



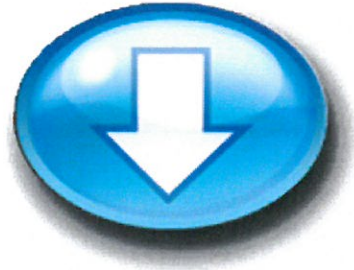
dame

Updated by Rona Gaffney 03.08.12

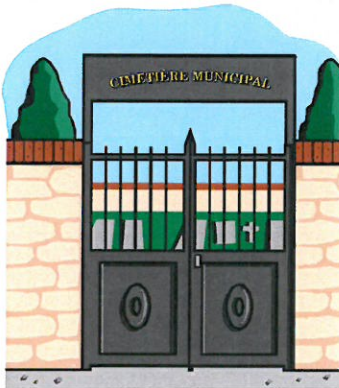




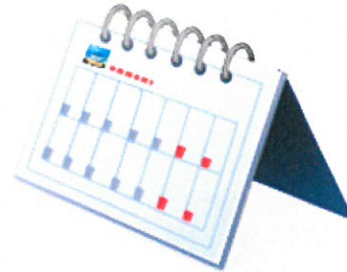
Gown



Down



Gate



Date



Guy



Die

Updated by Rona Gaffney 03.08.12



m/n



map



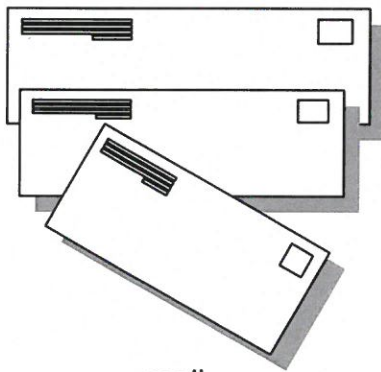
nap



man



nan



mail



nail

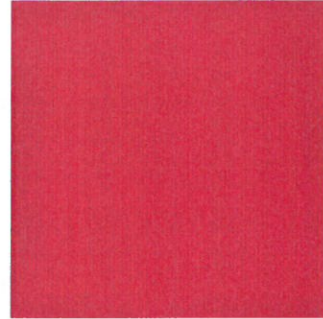
Updated by Rona Gaffney 03.08.12



w/r



wed



red



wait



rate



wake



rake

Updated by Rona Gaffney 03.08.12





white



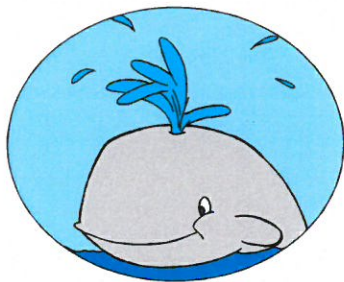
right



wipe



ripe



whale



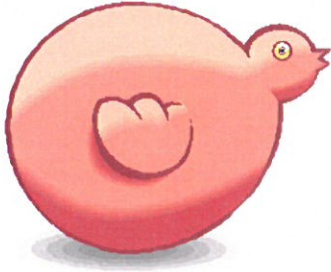
rail

Updated by Rona Gaffney 03.08.12





f/s



fat



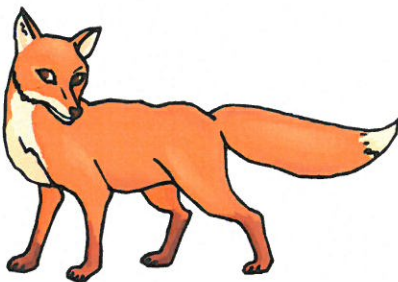
sat



feet



seat



fox

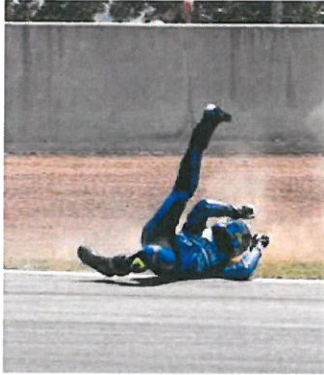


socks

Updated by Rona Gaffney 2015



f/sh



fall



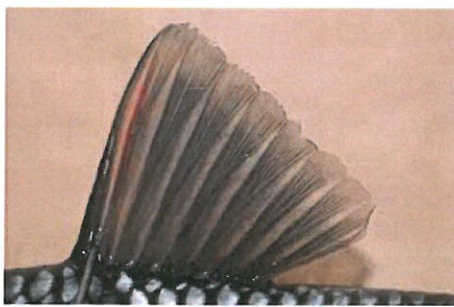
shawl



feet



sheet



fin



shin

Updated by Rona Gaffney 2015

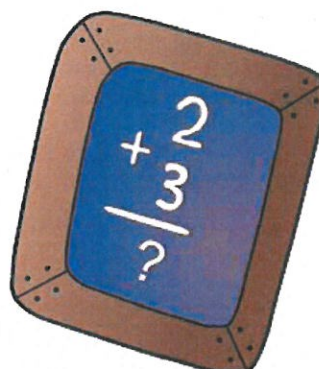




th/s



thumb



sum



think



sink



thank



sank

Updated by Rona Gaffney 2015



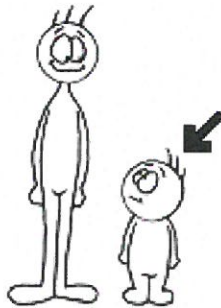
sh/s



shy



sigh



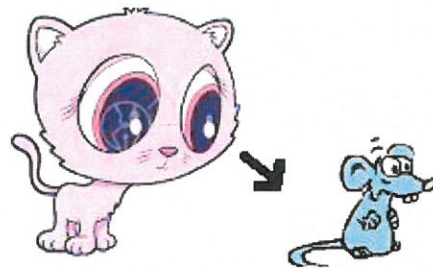
short



sort



she

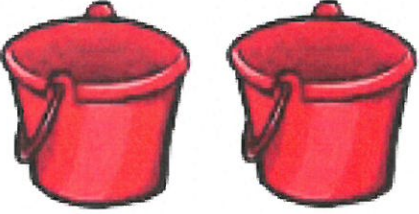

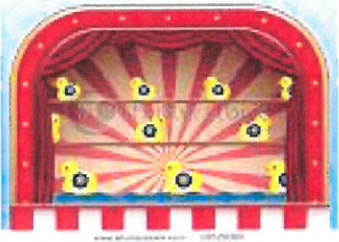



see

Updated by Rona Gaffney 2015





 <p>shame</p>	 <p>same</p>
 <p>sheet</p>	 <p>seat</p>
 <p>shoot</p>	 <p>suit</p>

Updated by Rona Gaffney 2015



r/y



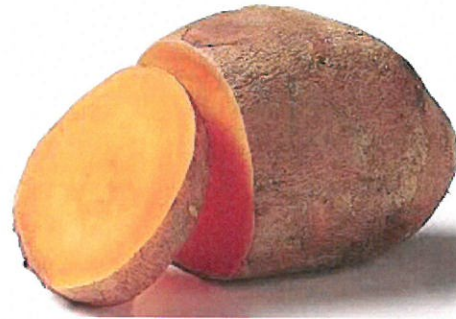
rot



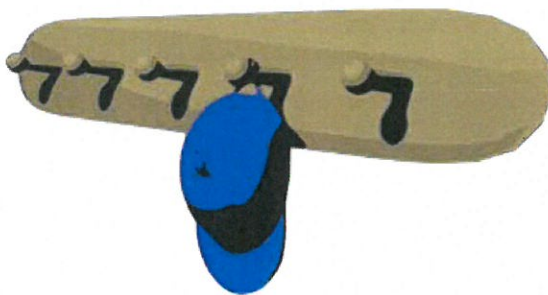
yacht



ram



yam



rack



yak

Updated by Rona Gaffney 03.08.12



y/w



yell



well



yolk



woke



year



weir

Updated by Rona Gaffney 03.08.12

