



Information about you on computer

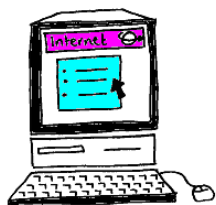
How your electronic health
record is shared to support
your health care

Easy Read Leaflet



**Caring, Learning
& Growing Together**

Publication Date: June 2021
Review Date: June 2023



We have a computer system. We keep your health information on it.

This means we can give the right information to the right people to help you keep well.



We share the information with people who look after you, so they can see it on their computer. We will ask you if this is ok.



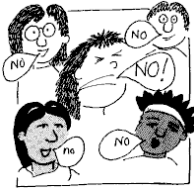
If you say yes, they will see things like what medication you are on and what health problems you have. They will be able to help you more quickly.



We look at information from people who look after you, so we can see it on our computer. We will ask you if this is ok.



If you say yes, we will see things like what medication you are on and what health problems you have and will be able to help you more quickly.



If you say “no”, it might take longer for you to get the help you need and you will have to give people the right information yourself.



Only those people who look after your health can look at this information, no-one else can look.

You can choose what information about you is shared.

You can change your mind about who can look at your information, if you do, tell your nurse or community team worker.

We share information with the National Records Locator Service and the Yorkshire and Humber Care Record.

CONTACT US

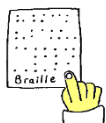


HNF-TR.IGTeam@nhs.net



Information Governance Team
01482 477854/477856

Please tell us if you would like this leaflet:



in Braille

LARGE PRINT



In bigger writing to see it better

あなたの情報

In another language.

Patient Advice and Liaison Service (PALS) and Complaints

Humber Teaching NHS Foundation Trust
Trust Headquarters
Willerby Hill
Beverly Road
Willerby
HU10 6ED



01482 303930



HumberNHSFT



HNF-TR.pals@nhs.net



HumberNHSFT



HNF-complaints@nhs.net



humber.nhs.uk



Caring, Learning
& Growing Together